



PEPT1 Polyclonal Antibody

Catalog No	YP-Ab-16494
Isotype	IgG
Reactivity	Human;Mouse;Rat
Applications	WB;ELISA;IHC
Gene Name	SLC15A1
Protein Name	Solute carrier family 15 member 1
Immunogen	The antiserum was produced against synthesized peptide derived from human SLC15A1. AA range:225-274
Specificity	PEPT1 Polyclonal Antibody detects endogenous levels of PEPT1 protein.
Formulation	Liquid in PBS containing 50% glycerol, 0.5% BSA and 0.02% sodium azide.
Source	Polyclonal, Rabbit,IgG
Purification	The antibody was affinity-purified from rabbit antiserum by affinity-chromatography using epitope-specific immunogen.
Dilution	WB 1:500-2000;IHC-p 1:50-300; ELISA 2000-20000
Concentration	1 mg/ml
Purity	≥90%
Storage Stability	-20°C/1 year
Synonyms	SLC15A1; PEPT1; Solute carrier family 15 member 1; Intestinal H(+)/peptide cotransporter; Oligopeptide transporter; small intestine isoform; Peptide transporter 1
Observed Band	37kD
Cell Pathway	Membrane ; Multi-pass membrane protein .
Tissue Specificity	Intestine,PCR rescued clones,
Function	function:Proton-coupled intake of oligopeptides of 2 to 4 amino acids with a preference for dipeptides. May constitute a major route for the absorption of protein digestion end-products.,similarity:Belongs to the PTR2/POT transporter (TC 2.A.17) family.,
Background	This gene encodes an intestinal hydrogen peptide cotransporter that is a member of the solute carrier family 15. The encoded protein is localized to the brush border membrane of the intestinal epithelium and mediates the uptake of di- and tripeptides from the lumen into the enterocytes. This protein plays an important role in the uptake and digestion of dietary proteins. This protein also facilitates the absorption of numerous peptidomimetic drugs. [provided by RefSeq, Apr 2010],



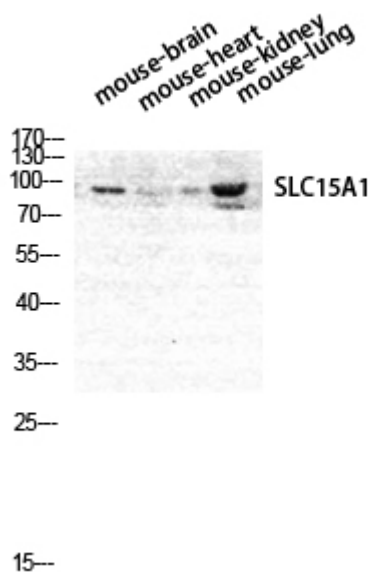
matters needing attention

Avoid repeated freezing and thawing!

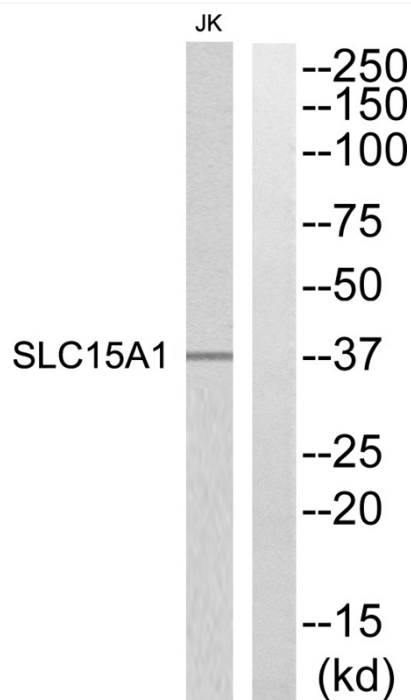
Usage suggestions

This product can be used in immunological reaction related experiments. For more information, please consult technical personnel.

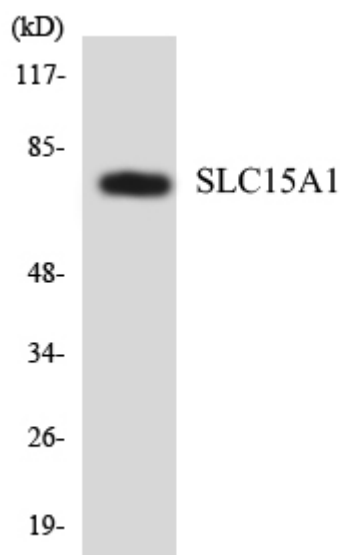
Products Images



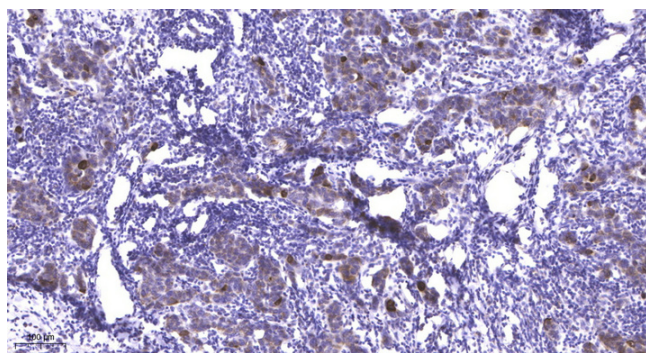
Western Blot analysis of MOUSE-BRAIN
MOUSE-HEART MOUSE-LUNG MOUSE-KIDNEY
cells using PEPT1 Polyclonal Antibody diluted at
1:1000



Western blot analysis of SLC15A1 Antibody. The lane
on the right is blocked with the SLC15A1 peptide.



Western blot analysis of the lysates from HeLa cells using SLC15A1 antibody.



Immunohistochemical analysis of paraffin-embedded human Breast cancer. 1, Antibody was diluted at 1:200(4° overnight). 2, Tris-EDTA, pH9.0 was used for antigen retrieval. 3, Secondary antibody was diluted at 1:200(room temperature, 45min).